

PRINTABLE ART AREAS FOR CARTONS:

EACH PRINT AREA (SHORT OR LONG SIDES) CANNOT BE MORE THAN 2.5 INCHES TALL.

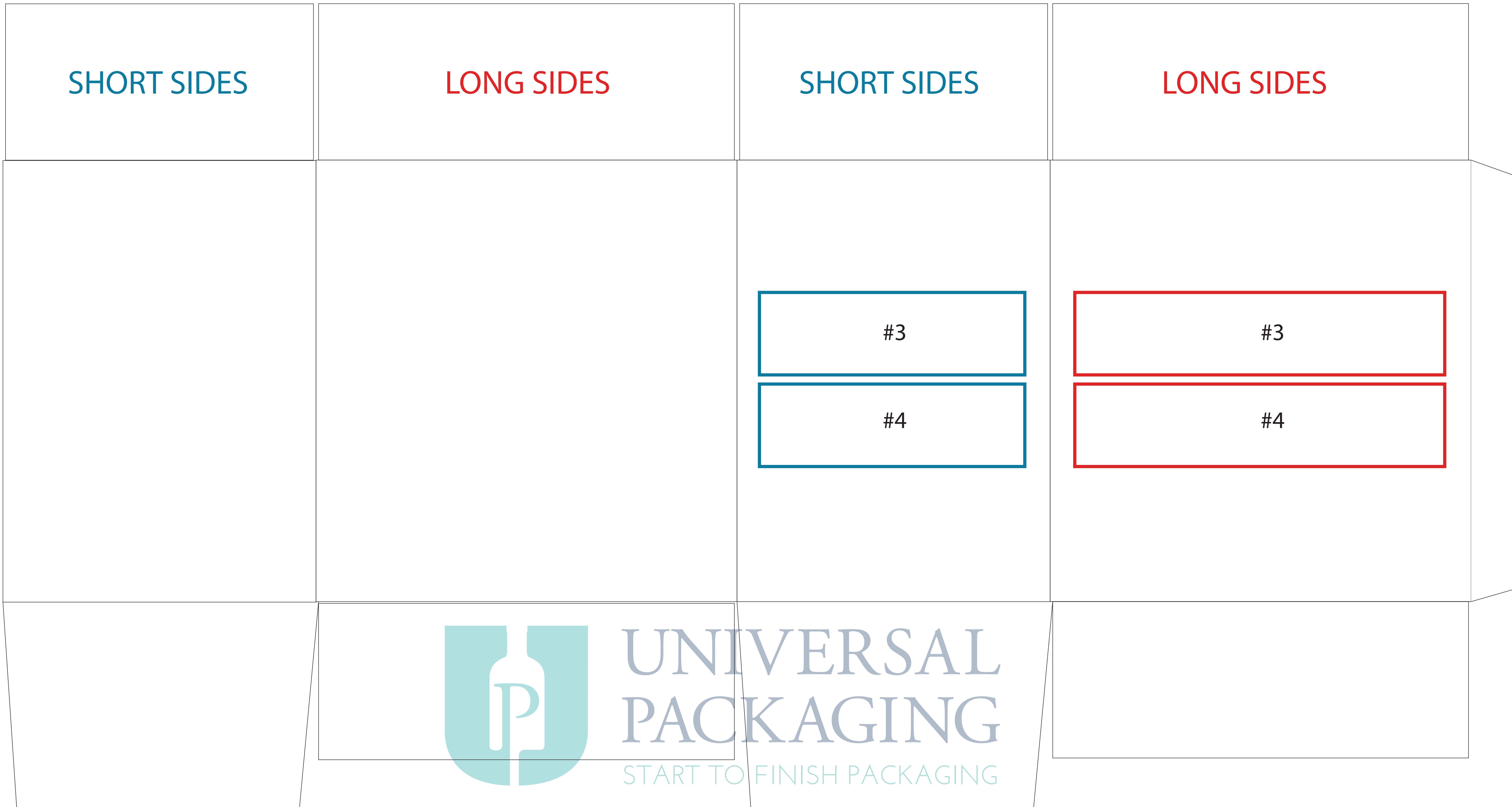
There are only two print areas per side, these areas can be moved up and down and away from each other but cannot be less than 1 inch from top and/or bottom.

PLEASE NOTE:

(1)When printing we have a tolerance of 1 to 2 inches horizontally.

DUE TO THIS TOLERANCE DO NOT SPLIT IMAGES BETWEEN PRINT AREAS AS IT WILL NOT ALIGN PROPERLY

(2)This is basic template for art placement only, the actual dimensions of the carton to be used in production may differ.



PRINTABLE ART AREAS FOR CARTONS:

EACH PRINT AREA (SHORT OR LONG SIDES) CANNOT BE MORE THAN 2.5 INCHES TALL.

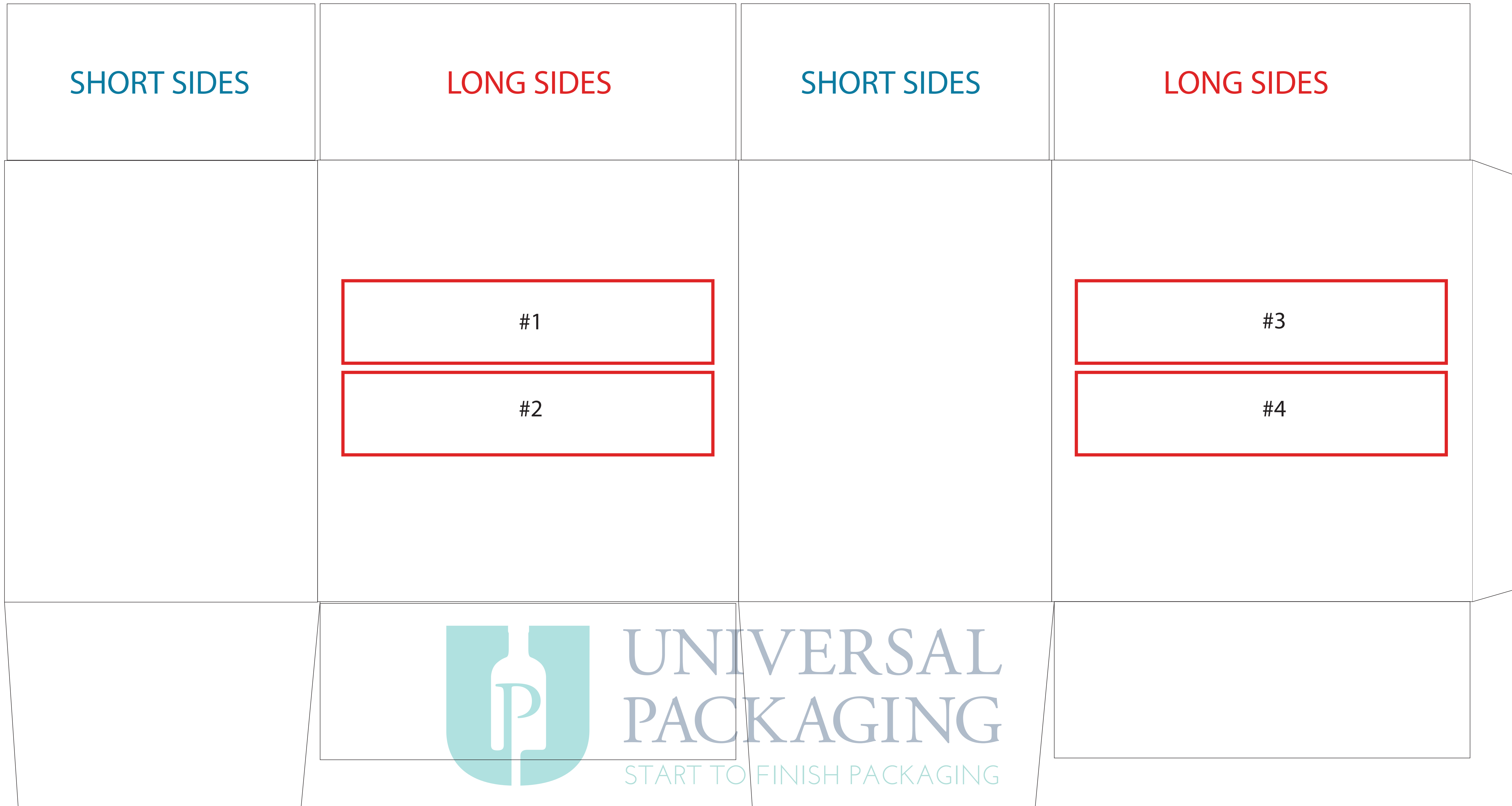
There are only two print areas per side, these areas can be moved up and down and away from each other but cannot be less than 1 inch from top and/or bottom.

PLEASE NOTE:

(1)When printing we have a tolerance of 1 to 2 inches horizontally.

DUE TO THIS TOLERANCE DO NOT SPLIT IMAGES BETWEEN PRINT AREAS AS IT WILL NOT ALIGN PROPERLY

(2)This is basic template for art placement only, the actual dimensions of the carton to be used in production may differ.



PRINTABLE ART AREAS FOR CARTONS:

EACH PRINT AREA (SHORT OR LONG SIDES) CANNOT BE MORE THAN 2.5 INCHES TALL.

There are only two print areas per side, these areas can be moved up and down and away from each other but cannot be less than 1 inch from top and/or bottom.

PLEASE NOTE:

(1)When printing we have a tolerance of 1 to 2 inches horizontally.

DUE TO THIS TOLERANCE DO NOT SPLIT IMAGES BETWEEN PRINT AREAS AS IT WILL NOT ALIGN PROPERLY

(2)This is basic template for art placement only, the actual dimensions of the carton to be used in production may differ.

